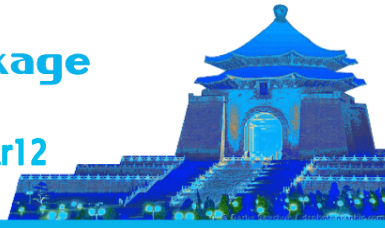


Taipei

3 Days / 2 Nights Hotel Package

台北三日兩夜自悠行

Ex HKG valid for travel between 20Jan-31Mar12



Note 1: Hotel stay must be completed on the mentioned period as below
Note 2: Any stay involves both higher & lower rate, the higher rate will be applied for entire stay.

Taiwan Package

Revised on 20Jan11(Superseded on 03Jan12)

Ref : BR2TPE0103/2N - AC200PP EN100PN

Departure Date	HKG/TPE valid on	TPE/HKG valid on	Surcharge Amount	Class Code	Remarks
20Jan-31Mar	Any Flight	Any Flight	HKD1000/Adult, HKD750/Child	T	(0-14Days)
26Jan-31Mar	BR 892 / 852 / 868 / 858		HKD300 /Adult, HKD230/Child (Not Eligible for mileage accrual)	U	
26Jan-31Mar	BR 892 / 852 / 868 / 858		HKD380 /Adult, HKD290/Child	V	
01Feb-31Mar	Any Flight		HKD480/Adult, HKD360/Child	X	(2-7Days)
	BR 892 / 852 / 868 / 870 / 858		No Surcharge (Not Eligible for mileage accrual)	H	
			HKD60/Adult, HKD50/Child (Not Eligible for mileage accrual)	R	
	Any Flight	HKD130/Adult, HKD100/Child (Not Eligible for mileage accrual)	U	(0-14Days)	
		HKD200/Adult, HKD150/Child	V		

HKG-TPE-HKG
Booking "H" Class Special Offers:
HKG-TPE valid on
BR892 / 852 / 868 / 870 / 856 / 858
Valid for departure On 01Feb-31Mar12
LESS HKD50/Adult, LESS HKD40/Child
Ticket Validity: 2 - 7 Days
(Not Eligible for Mileage Accrual)

Package price in HKD per person / Extra night in HKD per room

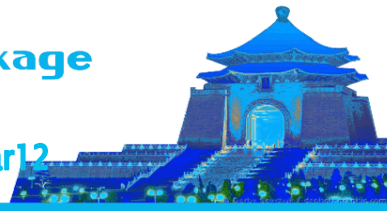
Hotel 酒店	Cat. 級數	Room Cat. 房間種類	Staying Period 住宿日期	B'fast 早餐	Adult Half Twin 成人佔半房	Adult Single 成人單人房	Adult Extra Bed 成人加床	Child Extra Bed 小童加床	Extension Night Single / Twin / Extra Bed 延期住宿每房每晚
Taipei Hotel 台北酒店	Flowers 華華 www.hotel-flowers.com.tw	2	Main Building Blackout period: 06-10Mar.	✗	1690	2090	1850	1590	510 / 510 / 250
	Chair Man Hotel 城美大飯店 www.chairman-hotel.com.tw	2	Standard Double Blackout period: 06-10Mar.	✓	1790	2050	1490	1250	490 / 570 / 70
	East Dragon 東龍 www.east-dragon.com.tw/	2	Run of House Blackout period: 06-10Mar	✓	1790	2090	1550	1290	510 / 600 / 100
	Fu Shang Hotel 富莊商務旅店 www.fuchanghotel.com.tw/index.html	2	Run of House	✗	1790	2250	1590	1350	590 / 610 / 120
	Lio Hotel(Xi-Men) 力歐時尚旅館(西門館) www.liohotel.com.tw	2	Run of House (Double Bed) Blackout period: 06-10Mar Hotel stay on Fri-Sun should apply surcharge of HKD60/Room/Night Hotel stay during 14Feb should apply surcharge of HKD60/Room/Night	✓	1790	2250	N/A	N/A	600 / 600 / Nil
	Lio Hotel (Zhan-Qian) 力歐時尚旅館(站前館) www.liohotel.com.tw	2	Run of House (Double Bed) Blackout period: 06-10Mar Hotel stay on Fri-Sat should apply surcharge of HKD60/Room/Night Hotel stay during 14Feb should apply surcharge of HKD60/Room/Night	✓	1790	2290	N/A	N/A	600 / 600 / Nil
	Paradise 伊樂園大飯店	2	A Building (The 2-4 th) Blackout period: 06-10Mar Hotel stay on Fri-Sat should apply surcharge of HKD60/Room/Night	✗	1790	2250	1590	1350	580 / 580 / 130
	Vip Hotel 台北上賓大飯店 www.viphotel.com.tw	3	Run of House Blackout period: 06-10Mar	✓	1790	2190	1590	1350	570 / 570 / 130
	First Hotel 第一大飯店 www.firsthoteltaipei.com	3	Standard Twin	✓	1850	2350	1790	1550	630 / 630 / 220
	Hotel 73 新尚旅店 www.hotel73.com/	2	Standard Double Blackout period:03-04Mar, 06Mar & 09Mar Hotel stay on Fri-Sat should apply surcharge of HKD120/Room/Night	✓	1850	2390	N/A	N/A	650 / 650 / Nil
	Leofoo 六福客棧 www.lefoo.com.tw/hotel	3	Run of House Blackout period: 06-10Mar	✓	1850 1790	2290 2250	1890 1690	1590 1450	610 / 630 / 270 590 / 600 / 180
	Liz Inn Hotel 麗仕商務飯店 www.lizhotel.tw	3	Run of House Blackout period: 06-10Mar All room without Bath-Tub but only shower	✓	1850	2350	N/A	N/A	640 / 640 / Nil
	Longstay Hotel 新樂町精緻旅居 ongstayhotel.tw	3	Business Room Blackout period: 06-10Mar Hotel stay during 26-28Feb should apply surcharge of HKD60/Room/Night Hotel stay on 25Feb should apply surcharge of HKD90/Room/Night	✗	1850	2390	N/A	N/A	650 / 650 / Nil
	Pretty Hotel 比堤飯店 www.prettyhotel.com.tw	3	Run of House Blackout period: 06-10Mar	✓	1850	2350	1550	1290	610 / 610 / 100
	Rainbow 長虹 www.rainbowhoteltaipei.com.tw	2	Run of House Blackout period: 06-10Mar	✓	1850	2350	1790	1550	640 / 660 / 240

Taipei

3 Days / 2 Nights Hotel Package

台北三日兩夜自悠行

Ex HKG valid for travel between 20Jan-31Mar12



Note 1: Hotel stay must be completed on the mentioned period as below
Note 2: Any stay involves both higher & lower rate, the higher rate will be applied for entire stay.

Taiwan Package

Revised on 20Jan11(Superseded on 03Jan12)

Ref : BR2TPE0103/2N - AC200PP EN100PN

Departure Date	HKG/TPE valid on	TPE/HKG valid on	Surcharge Amount	Class Code	Remarks
20Jan-31Mar	Any Flight	Any Flight	HKD1000/Adult, HKD750/Child	T	(0-14Days)
26Jan-31Mar	BR 892 / 852 / 868 / 858		HKD300 /Adult, HKD230/Child (Not Eligible for mileage accrual)	U	
26Jan-31Mar	BR 892 / 852 / 868 / 858		HKD380 /Adult, HKD290/Child	V	
01Feb-31Mar	BR 892 / 852 / 868 / 870 / 858		HKD480/Adult, HKD360/Child	X	(2-7Days)
			No Surcharge (Not Eligible for mileage accrual)	H	
			HKD60/Adult, HKD50/Child (Not Eligible for mileage accrual)	R	(0-14Days)
Any Flight	HKD130/Adult, HKD100/Child (Not Eligible for mileage accrual)	U			
		HKD200/Adult, HKD150/Child	V		

HKG-TPE-HKG
Booking "H" Class Special Offers:
HKG-TPE valid on
BR892 / 852 / 868 / 870 / 856 / 858
Valid for departure On 01Feb-31Mar12
LESS HKD50/Adult, LESS HKD40/Child
Ticket Validity: 2 - 7 Days
(Not Eligible for Mileage Accrual)

Package price in HKD per person / Extra night in HKD per room

Hotel 酒店	Cat. 級數	Room Cat. 房間種類	Staying Period 住宿日期	B'fast 早餐	Adult Half Twin 成人佔半房	Adult Single 成人單人房	Adult Extra Bed 成人加床	Child Extra Bed 小童加床	Extension Night Single / Twin / Extra Bed 延期住宿每房每晚
Riverview 豪景大酒店 www.riverview.com.tw	3	Run of House	20Jan-29Feb	✓	1850	2390	1790	1550	650 / 650 / 240
			01-31Mar		1890	2450		690 / 690 / 230	
🔔 Blackout period: 06-10Mar									
City Inn (I Building) 新驛旅店(1館-前站店) www.gocityinn.com	3	Run of House	Until 31Mar	✗	1890	2290	N/A	N/A	610 / 700 / Nil
			🔔 Blackout period: 07-10Mar12 Hotel stay on Fri-Sat should apply surcharge of HKD60/Room/Night Hotel stay during 24-27Feb should apply surcharge of HKD140/Single Room/Night, HKD190/Twin Room/Night						
City Inn (II Building) 新驛旅店(2館-後站店A館) www.gocityinn.com	3	Run of House	Until 31Mar	✗	1890	2290	N/A	N/A	620 / 720 / Nil
			🔔 Blackout period:07-10Mar12 Hotel stay on Fri-Sat should apply surcharge of HKD90/Single Room/Night, HKD60/Twin Room/Night Hotel stay during 24-27Feb should apply surcharge of HKD140/Single Room/Night, HKD190/Twin Room/Night						
City Inn (III Building) 新驛旅店(3館-後站店B館) www.cityinn.com.tw	3	Run of House	Until 31Mar	✗	1890	2290	N/A	N/A	620 / 720 / Nil
			🔔 Blackout period: 07-10Mar12 Hotel stay on Fri-Sat should apply surcharge of HKD90/Single Room/Night, HKD60/Twin Room/Night Hotel stay during 24-27Feb should apply surcharge of HKD140/Single Room/Night, HKD190/Twin Room/Night						
Da-Hshin 大欣 www.dhotel.com.tw/	2	Run of House	Until 31Mar	✓	1890	2350	N/A	N/A	630 / 680 / Nil
			🔔 Blackout period: 06-10Mar						
Ferrary Hotel 華麗大飯店 www.f-hotel.com.tw	3	Run of House	Until 31Mar	✓	1890	2390	1690	1450	650 / 710 / 170
			🔔 Blackout period: 06-10Mar.						
City Inn (IV Building) 新驛旅店(4館-西門捷連店) www.cityinn.com.tw	3	Run of House (Double bed)	Until 31Mar	✗	1950	2590	N/A	N/A	750 / 750 / Nil
			🔔 Blackout period:07-10Mar Hotel stay on Fri-Sat should apply surcharge of HKD90/Room/Night Hotel stay during 24-27Feb should apply surcharge of HKD90/Room/Night						
Dandy Hotel (Da-An) 丹迪旅店-(大安店) www.dandyhotel.com.tw	3	Standard Double	Until 31Mar	✓	1950	2590	N/A	N/A	770 / 770 / Nil
			🔔 Blackout period: 06-10Mar Hotel stay on Fri-Sat should apply surcharge of HKD60/Room/Night Hotel stay during 23-28Jan should apply surcharge of HKD250/Room/Night Hotel stay during 24-27Feb should apply surcharge of HKD60/Room/Night						
Han She Hotel(Hansome) 函舍商務旅店 www.hansomehotel.com.tw	3	Standard Double	Until 31Mar	✓	1950	2450	N/A	N/A	680 / 740 / Nil
			🔔 Hotel stay on Fri-Sat should apply surcharge of HKD60/Room/Night Blackout period: 06-10Mar.						
Just Sleep (LinSen) 捷絲旅(林森館) www.justsleep.com.tw	4	Run of House	Until 31Mar	✓	1950	2550	N/A	N/A	720 / 720 / Nil
			🔔 Hotel stay on Fri-Sat should apply surcharge of HKD90/Room/Night Hotel stay during 06-10Mar should apply surcharge of HKD190/Room/Night						
Mai Hotel 舞衣新宿 maihotel.com.tw	3	Run of House	20Jan-29Feb	✓	1950	2590	1750	1490	750 / 750 / 200
			01-31Mar				2050	1750	750 / 750 / 340
🔔 Blackout period: 06-10Mar.									
Sunworld Dynasty 王朝大飯店 www.sunworlddynasty.com.tw	4	Superior Room	Until 31Jan	✗	1950	2590	2290	2050	760 / 760 / 470
Won Star (Chung Hwa) 萬事達(中華店) www.wonstar.com.tw/Zhonghua/	2	Standard Double	Until 31Mar	✓	1950	2350	1750	1450	640 / 720 / 190
			🔔 Blackout period: 06-10Mar Hotel stay on Fri-Sat should apply surcharge of HKD60/ Single or Twin Room/Night, HKD140/Triple Room/Night						

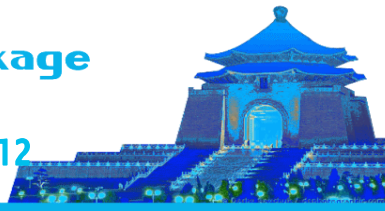
Taipei Hotel
台北酒店

Taipei

3 Days / 2 Nights Hotel Package

台北三日兩夜自悠行

Ex HKG valid for travel between 20Jan-31Mar12



Note 1: Hotel stay must be completed on the mentioned period as below
Note 2: Any stay involves both higher & lower rate, the higher rate will be applied for entire stay.

Taiwan Package

Revised on 20Jan11(Superseded on 03Jan12)

Ref : BR2TPE0103/2N - AC200PP EN100PN

Departure Date	HKG/TPE valid on	TPE/HKG valid on	Surcharge Amount	Class Code	Remarks
20Jan-31Mar	Any Flight	Any Flight	HKD1000/Adult, HKD750/Child	T	(0-14Days)
26Jan-31Mar	BR 892 / 852 / 868 / 858		HKD300 /Adult, HKD230/Child (Not Eligible for mileage accrual)	U	
26Jan-31Mar	BR 892 / 852 / 868 / 858		HKD380 /Adult, HKD290/Child	V	
01Feb-31Mar	BR 892 / 852 / 868 / 870 / 858		HKD480/Adult, HKD360/Child	X	(2-7Days)
			No Surcharge (Not Eligible for mileage accrual)	H	
			HKD60/Adult, HKD50/Child (Not Eligible for mileage accrual)	R	(0-14Days)
Any Flight	HKD130/Adult, HKD100/Child (Not Eligible for mileage accrual)	U			
		HKD200/Adult, HKD150/Child	V		

HKG-TPE-HKG
Booking "H" Class Special Offers:
HKG-TPE valid on
BR892 / 852 / 868 / 870 / 856 / 858
Valid for departure On 01Feb-31Mar12
LESS HKD50/Adult, LESS HKD40/Child
Ticket Validity: 2 - 7 Days
(Not Eligible for Mileage Accrual)

Package price in HKD per person / Extra night in HKD per room

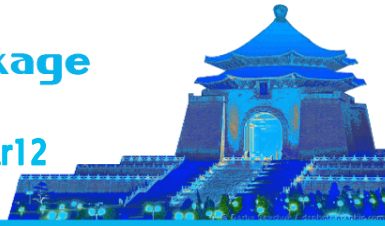
Hotel 酒店	Cat. 級數	Room Cat. 房間種類	Staying Period 住宿日期	B'fast 早餐	Adult Half Twin 成人佔半房	Adult Single 成人單人房	Adult Extra Bed 成人加床	Child Extra Bed 小童加床	Extension Night Single / Twin / Extra Bed 延期住宿每房每晚
Taipei Hotel 台北酒店	2	Standard Twin	Until 31Mar	✓	1950	2550	1750	1450	720 / 720 / 190
		Blackedout period: 06-10Mar Hotel stay on Fri-Sat should apply surcharge of HKD60/ Single or Twin Room/Night, HKD140/Triple Room/Night							
	3	Run of House	Until 31Mar	✓	1990	2550	1690	1450	730 / 780 / 180
		Remark: Except Japanese passport Remark: Minimum 2 nights stay required during 01-31Mar12 between Saturday Hotel stay during 06-09Mar should apply surcharge of HKD80/Room/Night							
	3	Run of House	Until 31Mar	✓	1950	2490	N/A	N/A	720 / 750 / Nil
	3	Run of House	Until 31Mar	✓	1990	2350	N/A	N/A	630 / 770 / Nil
		Blackedout period: 06-10Mar.							
	3	Run of House	Until 31Mar	✓	1990	2350	N/A	N/A	630 / 770 / Nil
		Blackedout period: 06-10Mar.							
	3	Run of House	20Jan-29Feb	✓	1990	2490	N/A	N/A	710 / 800 / Nil
		01-31Mar	1890	2450	690 / 690 / Nil				
	Blackedout period: 07-12Mar								
	4	Run of House	20Jan-29Feb	✗	1990	2690	1790	1550	820 / 820 / 220
		01-31Mar	2250	3190	1050 / 1050 / 230				
	Remark: Except Japanese passport Blackedout period: 06-10Mar								
5	Superior Room	20Jan-29Feb	✗	1990	2690	1950	1690	810 / 810 / 300	
	Run of House	01-31Mar	✓	2250	2950	2150	1850	940 / 1020 / 390	
Hotel stay during 06-08Mar should apply surcharge of HKD270/Room/Night									
4	Run of House	Until 31Mar	✓	1990	2690	N/A	N/A	810 / 810 / Nil	
	Hotel stay on Fri-Sat should apply surcharge of HKD90/Room/Night Hotel stay during 06-10Mar should apply surcharge of HKD190/Room/Night								
4	Run of House	Until 31Mar	✓	1990	2590	1690	1450	770 / 770 / 180	
	Blackedout period: 06-10Mar.								
4	Deluxe Room	Until 31Mar	✓	1990	2650	N/A	N/A	790 / 790 / Nil	
	Hotel stay during 06-10Mar should apply surcharge of HKD90/Room/Night								
	Executive Room	Until 31Mar	✓	2150	2890	N/A	N/A	910 / 910 / Nil	
Hotel stay during 06-10Mar should apply surcharge of HKD90/Room/Night									
3	Superior Room	Until 31Mar	✓	2050	2790	N/A	N/A	850 / 850 / Nil	
	Blackedout period: 06-10Mar. Hotel stay on Fri-Sat should apply surcharge of HKD90/Room/Night Hotel stay during 26-28Feb should apply surcharge of HKD90/Room/Night								
3	Luxury Room	20Jan-29Feb	✓	2050	2790	N/A	N/A	850 / 850 / Nil	
		01-31Mar	1990	2650	770 / 770 / Nil				
Blackedout period: 06-10Mar. Hotel stay during 20Jan-29Feb between Fri-Sat should apply surcharge of HKD60/Room/Night Hotel stay during 01-31Mar between Mon-Thu should apply surcharge of HKD60/Room/Night Hotel stay during 01-31Mar between Fri-Sat should apply surcharge of HKD110/Room/Night Hotel stay during 26-28Feb should apply surcharge of HKD60/Room/Night									

Taipei

3 Days / 2 Nights Hotel Package

台北三日兩夜自悠行

Ex HKG valid for travel between 20Jan-31Mar12



Note 1: Hotel stay must be completed on the mentioned period as below
Note 2: Any stay involves both higher & lower rate, the higher rate will be applied for entire stay.

Taiwan Package

Revised on 20Jan11(Superseded on 03Jan12)

Ref : BR2TPE0103/2N - AC200PP EN100PN

Departure Date	HKG/TPE valid on	TPE/HKG valid on	Surcharge Amount	Class Code	Remarks
20Jan-31Mar	Any Flight	Any Flight	HKD1000/Adult, HKD750/Child	T	(0-14Days)
26Jan-31Mar	BR 892 / 852 / 868 / 858		HKD300 /Adult, HKD230/Child (Not Eligible for mileage accrual)	U	
26Jan-31Mar	BR 892 / 852 / 868 / 858		HKD380 /Adult, HKD290/Child	V	
			HKD480/Adult, HKD360/Child	X	
01Feb-31Mar	BR 892 / 852 / 868 / 870 / 858		No Surcharge (Not Eligible for mileage accrual)	H	(2-7Days)
			HKD60/Adult, HKD50/Child (Not Eligible for mileage accrual)	R	(0-14Days)
			HKD130/Adult, HKD100/Child (Not Eligible for mileage accrual)	U	
			HKD200/Adult, HKD150/Child	V	
	Any Flight				

HKG-TPE-HKG

Booking "H" Class Special Offers:

HKG-TPE valid on

BR892 / 852 / 868 / 870 / 856 / 858

Valid for departure On 01Feb-31Mar12

LESS HKD50/Adult, LESS HKD40/Child

Ticket Validity: 2 - 7 Days

(Not Eligible for Mileage Accrual)

Package price in HKD per person / Extra night in HKD per room

Hotel 酒店	Cat. 級數	Room Cat. 房間種類	Staying Period 住宿日期	B'fast 早餐	Adult Half Twin 成人佔半房	Adult Single 成人單人房	Adult Extra Bed 成人加床	Child Extra Bed 小童加床	Extension Night Single / Twin / Extra Bed 延期住宿每房每晚	
Burgary Hotel 寶格利時尚旅館 www.burgaryhotel.com/	3	Yellow Diamond	Until 31Mar	✓	2050	2750	N/A	N/A	840 / 840 / Nil	
		Blackout period: 06-10Mar. Remark: Yellow Diamond only Shower (No Bath-Tub) Hotel stay on Fri-Sat should apply surcharge of HKD170/Room/Night Hotel stay during 26-27Feb should apply surcharge of HKD170/Room/Night								
	Golden China 康華大飯店 www.golden-china.com.tw	3	Run of House	20Jan-29Feb	✓	2050	2690	1950	1650	800 / 830 / 290
				01-31Mar		1990	2590			750 / 780 / 280
	Blackout period: 06-10Mar									
	Grandee 台北官邸飯店 www.grandeehotel.com.tw/	3	Run of House (Double Bed)	Until 31Mar	✓	2050	2790	1950	1690	850 / 850 / 310
			Blackout period: 06-10Mar. Hotel stay during 20Jan-29Feb between Fri should apply surcharge of HKD60/Room/Night Hotel stay during 20Jan-29Feb between Sat should apply surcharge of HKD120/Room/Night Hotel stay during 01-31Mar between Fri should apply surcharge of HKD90/Room/Night Hotel stay during 01-31Mar between Sat should apply surcharge of HKD140/Room/Night							
	Santos 三德 www.santoshotel.com/	3	Run of House	Until 31Mar	✓	2050	2690	N/A	N/A	820 / 820 / Nil
			Blackout period: 06-10Mar							
	Caesar Park 凱撒 www.caesarpark.com.tw	4	Superior Room	Until 31Jan	✗	2090	2890	1950	1690	900 / 900 / 300
Blackout period: 06-10Mar										
Four Points by Sheraton (Chung Ho) 福朋喜來登飯店(中和市) www.fourpoints.com.tw	4	Superior Room	Until 31Mar	✗	2090	2890	N/A	N/A	910 / 910 / Nil	
		Blackout period: 06-10Mar								
Gala Hotel 慶泰大飯店 www.galahotel.com.tw	4	Deluxe Room	20Jan-29Feb	✓	2090	2690	1850	1590	830 / 880 / 250	
			01-31Mar		2150	2850			880 / 940 / 250	
The above rates are applicable for Hong Kong Market only Hotel stay during 06-09Mar should apply surcharge of HKD170/Room/Night										
United 國聯 www.unitedhotel.com.tw/	4	Superior Room	Until 31Mar	✓	2090	2850	2050	1750	880 / 880 / 340	
		Hotel stay during 06-09Mar should apply surcharge of HKD570/Room/Night								
Grand Hotel 圓山大飯店 www.grand-hotel.org	5	Superior Room	20Jan-29Feb	✗	2150	2990	2050	1790	950 / 950 / 360	
			01-31Mar		2350	3390	N/A	N/A	1150 / / 1150 / Nil	
Blackout period: 06-10Mar										
Howard Plaza 福華 www.howard-hotels.com/	5	Superior Room	20Jan-29Feb	✓	2150	2950	2390	2150	930 / 930 / 540	
			01-31Mar		2390	3390			1150 / 1210 / 520	
Blackout period: 06-10Mar										
Hotel HD Palace 宏都金殿飯店 www.hdpalace.com.tw/	3	Run of House	20Jan-29Feb	✓	2150	2950	N/A	N/A	920 / 920 / Nil	
			01-31Mar		2250	2990	1850	1590	960 / 1040 / 260	
Blackout period: 03-04Mar, 06Mar & 09Mar										
Rich Garden 富園國際商務飯店 www.rich-gardenhotel.com.tw	3	Business Standard Double	Until 31Mar	✓	2150	2690	N/A	N/A	800 / 940 / Nil	
		Blackout period: 06-10Mar								

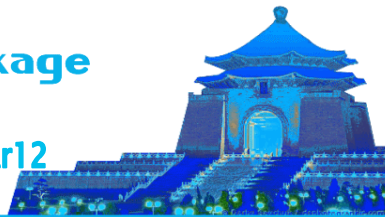
Taipei Hotel 台北酒店

Taipei

3 Days / 2 Nights Hotel Package

台北三日兩夜自悠行

Ex HKG valid for travel between 20Jan-31Mar12



Note 1: Hotel stay must be completed on the mentioned period as below
Note 2: Any stay involves both higher & lower rate, the higher rate will be applied for entire stay.

Taiwan Package

Revised on 20Jan11(Superseded on 03Jan12)

Ref : BR2TPE0103/2N - AC200PP EN100PN

Departure Date	HKG/TPE valid on	TPE/HKG valid on	Surcharge Amount	Class Code	Remarks
20Jan-31Mar	Any Flight	Any Flight	HKD1000/Adult, HKD750/Child	T	(0-14Days)
26Jan-31Mar	BR 892 / 852 / 868 / 858		HKD300 /Adult, HKD230/Child (Not Eligible for mileage accrual)	U	
26Jan-31Mar	BR 892 / 852 / 868 / 858		HKD380 /Adult, HKD290/Child	V	
01Feb-31Mar	Any Flight		HKD480/Adult, HKD360/Child	X	(2-7Days)
	BR 892 / 852 / 868 / 870 / 858		No Surcharge (Not Eligible for mileage accrual)	H	
			HKD60/Adult, HKD50/Child (Not Eligible for mileage accrual)	R	(0-14Days)
		Any Flight	HKD130/Adult, HKD100/Child (Not Eligible for mileage accrual)	U	
		HKD200/Adult, HKD150/Child	V		

HKG-TPE-HKG
Booking "H" Class Special Offers:
HKG-TPE valid on
BR892 / 852 / 868 / 870 / 856 / 858
Valid for departure On 01Feb-31Mar12
LESS HKD50/Adult, LESS HKD40/Child
Ticket Validity: 2 - 7 Days
(Not Eligible for Mileage Accrual)

Package price in HKD per person / Extra night in HKD per room

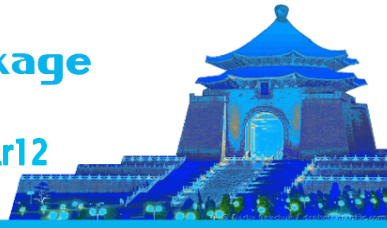
Hotel 酒店	Cat. 級數	Room Cat. 房間種類	Staying Period 住宿日期	B'fast 早餐	Adult Half Twin 成人佔半房	Adult Single 成人單人房	Adult Extra Bed 成人加床	Child Extra Bed 小童加床	Extension Night Single / Twin / Extra Bed 延期住宿每房每晚
Taipei Hotel 台北酒店	4	Business Room	Until 31Mar	✓	2150	2850	N/A	N/A	890 / 950 / Nil
		Blackout period: 06-10Mar							
	4	Run of House	Until 31Mar	✗	2190	2790	1850	1590	860 / 970 / 260
		Hotel stay during 06-10Mar should apply surcharge of HKD220/Room/Night.							
	4	Deluxe Room	20Jan-29Feb	✓	2190	3050	1950	1690	990 / 990 / 310
		Run of House	01-31Mar	✗	2350	3250	N/A	N/A	1070 / 1130 / Nil
	Hotel stay during 06-10Mar should apply surcharge of HKD350/Room/Night								
	5	Superior Room	Until 31Mar	✗	2190	3050	N/A	N/A	990 / 990 / Nil
		Blackout period: 06-10Mar							
	3	Deluxe Room	20Jan-29Feb	✓	2190	3050	N/A	N/A	970 / 970 / Nil
			01-31Mar	✗	2090	2790	1850	1590	850 / 880 / 260
	Blackout period:06-10Mar								
	5	Run of House	20Jan-29Feb	✗	2250	3090	2050	1790	1000 / 1020 / 350
			01-31Mar	✗	2290	3290			1100 / 1100 / 310
	Blackout period: 06-10Mar.								
	4	Superior Room	Until 31Mar	✓	2250	3050	1950	1750	990 / 1050 / 320
Blackout period: 06-10Mar.									
4	Superior Room	20Jan-29Feb	✓	2290	3250	2150	1850	1080 / 1080 / 390	
		Run of House	01-31Mar	✗	2090	2890	2050	1750	910 / 910 / 340
Hotel stay during 06-10Mar should apply surcharge of HKD350/Room/Night									
4	Superior Room	Until 31Mar	✓	2250	3190	N/A	N/A	1050 / 1050 / Nil	
		Blackout period: 07-10Mar							
5	Superior Room	Until 31Mar	✓	2290	3190	2190	1950	1080 / 1080 / 420	
		Special Hotel Offer (Minimum 2nights consecutive nights stay required) Package incl one way free-go bus tickets from hotel to airport							
4	Run of House	20Jan-29Feb	✓	2290	3090	2050	1790	1000 / 1080 / 360	
		01-31Mar	✗	2450	3390			1170 / 1250 / 360	
Blackout period: 06-10Mar. Remark: Extra bed provide as sofa bed									
5	Superior Room	20Jan-29Feb	✓	2290	3150	1790	1550	1040 / 1090 / 220	
		01-31Mar	✗	2390	3350	2050	1750	1130 / 1190 / 340	
Remark: Remark: Except China & Taiwanese Passport Hotel stay during 07-10Mar should apply surcharge of HKD420/Room/Night									
5	Deluxe Room	20Jan-29Feb	✗	2290	3250	2250	1990	1090 / 1090 / 450	
		Run of House	01-31Mar	✗	2550	3690	2250	1950	1310 / 1310 / 440
Blackout period: 06-10Mar Hotel stay during 20Jan-29Feb between Mon-Thu should apply surcharge of HKD320/Room/Night Hotel stay during 01-31Mar between Mon-Thu should apply surcharge of HKD190/Room/Night									
4	Run of House	20Jan-29Feb	✓	2350	3350	2390	2150	1130 / 1130 / 530	
		01-31Mar	✗	2290	3290			1100 / 1100 / 520	
Blackout period:06-09Mar									

Taipei

3 Days / 2 Nights Hotel Package

台北三日兩夜自悠行

Ex HKG valid for travel between 20Jan-31Mar12



Note 1: Hotel stay must be completed on the mentioned period as below
Note 2: Any stay involves both higher & lower rate, the higher rate will be applied for entire stay.

Taiwan Package

Revised on 20Jan11(Superseded on 03Jan12)

Ref : BR2TPE0103/2N - AC200PP EN100PN

Departure Date	HKG/TPE valid on	TPE/HKG valid on	Surcharge Amount	Class Code	Remarks	
20Jan-31Mar	Any Flight	Any Flight	HKD1000/Adult, HKD750/Child	T	(0-14Days)	
26Jan-31Mar	BR 892 / 852 / 868 / 858		HKD300 /Adult, HKD230/Child (Not Eligible for mileage accrual)	U		
26Jan-31Mar	BR 892 / 852 / 868 / 858		HKD380 /Adult, HKD290/Child	V		
			HKD480/Adult, HKD360/Child	X		
01Feb-31Mar	BR 892 / 852 / 868 / 870 / 858		No Surcharge (Not Eligible for mileage accrual)	H		(2-7Days)
			HKD60/Adult, HKD50/Child (Not Eligible for mileage accrual)	R		(0-14Days)
		HKD130/Adult, HKD100/Child (Not Eligible for mileage accrual)	U			
	Any Flight		HKD200/Adult, HKD150/Child	V		

HKG-TPE-HKG
Booking "H" Class Special Offers:
HKG-TPE valid on
BR892 / 852 / 868 / 870 / 856 / 858
Valid for departure On 01Feb-31Mar12
LESS HKD50/Adult, LESS HKD40/Child
Ticket Validity: 2 - 7 Days
(Not Eligible for Mileage Accrual)

Package price in HKD per person / Extra night in HKD per room

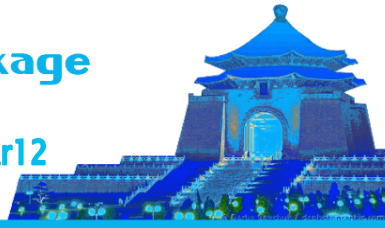
Hotel 酒店	Cat. 級數	Room Cat. 房間種類	Staying Period 住宿日期	B'fast 早餐	Adult Half Twin 成人佔半房	Adult Single 成人單人房	Adult Extra Bed 成人加床	Child Extra Bed 小童加床	Extension Night Single / Twin / Extra Bed 延期住宿每房每晚
Royal Taipei 老爺大飯店 www.royal-taipei.com.tw	5	Superior Room	20Jan-29Feb	x	2290	3290	2050	1790	1110 / 1110 / 350
		Run of House	01-31Mar		2490	3590			1260 / 1260 / 360
☹️ Blackout period: 06-09Mar & 17-19Mar Hotel stay on Mon-Thu should apply surcharge of HKD160/Room/Night									
Westin 六福皇宮 www.westin.com.tw/	5	Superior Room	20Jan-29Feb	x	2490	3650	N/A	N/A	1300 / 1300 / Nil
			01-31Mar		2790	4190			1570 / 1570 / Nil
☹️ The above rates are applicable for Hong Kong Market only Hotel stay during 01-31Mar between Mon-Thu should apply surcharge of HKD280/Room/Night									
Hotel Eclat Taipei 怡亨酒店 eclathotel.com.tw	5	Deluxe Room	Until 29Feb	✓	2550	3650	N/A	N/A	1290 / 1340 / Nil
Grand Hyatt 君悅 taipei.grand.hyatt.com.tw/	5	Run of House	20Jan-29Feb	x	2550	3750	2250	1950	1330 / 1330 / 440
			01-31Mar						1750
☹️ Blackout period:06-10Mar Hotel stay during 05-31Mar should apply should apply surcharge of HKD640/Room/Night									
Les Suites (Da-An) 台北商旅(大安店) www.suitetpe.com.tw/	5	Standard Double	20Jan-29Feb	✓	2590	3790	N/A	N/A	1380 / 1380 / Nil
			01-31Mar		2650				1380 / 1450 / Nil
☹️ Hotel stay during 06-08Mar should apply surcharge of HKD550/Room/Night									
Sheraton 喜來登 www.sheraton-taipei.com/	5	Deluxe Room	20Jan-29Feb	x	2590	3890	N/A	N/A	1410 / 1410 / Nil
			01-31Mar		2850	4350			2290
Palais De Chine Hotel 君品酒店 www.palaisdechinehotel.com	5	Superior Room	Until 31Mar	✓	2650	3950	N/A	N/A	1430 / 1430 / Nil
		☹️ Blackout period: 03-10Mar Remark: Except Japanese passport & Taiwan passport							
The Regent 晶華 www.grandformosa.com.tw/	5	Deluxe Room	Until 31Mar	x	2650	3950	2290	2050	1430 / 1430 / 460
		☹️ Remark: Except Japanese Market Hotel stay during 20Jan-29Feb between Tue-Thu should apply surcharge of HKD200/Room/Night Hotel stay during 01-31Mar should apply surcharge of HKD420/Room/Night							
Les Suites (Ching-Cheng) 台北商旅(慶城店) www.suitetpe.com.tw/	5	Standard Room	20Jan-29Feb	✓	2690	3850	N/A	N/A	1380 / 1510 / Nil
			01-31Mar		2850	4090			2290
☹️ Hotel stay during 06-08Mar should apply surcharge of HKD550/Room/Night									
Shangri-la's Far Eastern Plaza 遠東國際 www.shangri-la.com/	5	Superior Room	20Jan-29Feb	✓	2790	4190	2350	2090	1570 / 1570 / 510
			01-31Mar						x
		☹️ Remark: Minimum 2 consecutive nights stay is required during 20Jan-29Feb Hotel stay on Mon-Thu should apply surcharge of HKD550/Room/Night							
		Deluxe Room	Until 31Mar	x	2890	4490	2050	1750	1710 / 1710 / 340
☹️ Hotel stay on Mon-Thu should apply surcharge of HKD530/Room/Night									
Hotel Quote Taipei www.hotel-quote.com	4	T-Room	Until 31Mar	✓	2890	4190	N/A	N/A	1570 / 1710 / Nil
☹️ Hotel stay on Fri-Sun should apply surcharge of HKD60/Room/Night									
W Taipei www.starwoodhotels.com/whotels	5	Wonderful Room	Until 31Mar	x	2990	4650	2250	1990	1780 / 1780 / 450
		☹️ Blackout period: 06-10Mar.							
Le Meridien Taipei 台北寒舍艾美酒店 www.lemeridien-taipei.com	5	Run of House	20Jan-29Feb	x	3090	4550	2590	2350	1740 / 1890 / 630
		Deluxe Room	01-31Mar						3690
☹️ Blackout period: 07-10Mar Hotel stay during 20Jan-29Feb between Mon-Thu should apply surcharge of HKD290/Room/Night									

Taipei

3 Days / 2 Nights Hotel Package

台北三日兩夜自悠行

Ex HKG valid for travel between 20Jan-31Mar12



Note 1: Hotel stay must be completed on the mentioned period as below
Note 2: Any stay involves both higher & lower rate, the higher rate will be applied for entire stay.

Taiwan Package

Revised on 20Jan11(Superseded on 03Jan12)

Ref : BR2TPE0103/2N - AC200PP EN100PN

Departure Date	HKG/TPE valid on	TPE/HKG valid on	Surcharge Amount	Class Code	Remarks
20Jan-31Mar	Any Flight	Any Flight	HKD1000/Adult, HKD750/Child	T	(0-14Days)
26Jan-31Mar	BR 892 / 852 / 868 / 858		HKD300 /Adult, HKD230/Child (Not Eligible for mileage accrual)	U	
26Jan-31Mar	BR 892 / 852 / 868 / 858		HKD380 /Adult, HKD290/Child	V	
01Feb-31Mar	Any Flight		HKD480/Adult, HKD360/Child	X	(2-7Days)
	BR 892 / 852 / 868 / 870 / 858		No Surcharge (Not Eligible for mileage accrual)	H	
			HKD60/Adult, HKD50/Child (Not Eligible for mileage accrual)	R	
	Any Flight	HKD130/Adult, HKD100/Child (Not Eligible for mileage accrual)	U	(0-14Days)	
		HKD200/Adult, HKD150/Child	V		

HKG-TPE-HKG

Booking "H" Class Special Offers:

HKG-TPE valid on

BR892 / 852 / 868 / 870 / 856 / 858

Valid for departure On 01Feb-31Mar12

LESS HKD50/Adult, LESS HKD40/Child

Ticket Validity: 2 - 7 Days

(Not Eligible for Mileage Accrual)

Package price in HKD per person / Extra night in HKD per room

Hotel 酒店	Cat. 級數	Room Cat. 房間種類	Staying Period 住宿日期	B'fast 早餐	Adult Half Twin 成人佔半房	Adult Single 成人單人房	Adult Extra Bed 成人加床	Child Extra Bed 小童加床	Extension Night Single / Twin / Extra Bed 延期住宿每房每晚
Wulai Spring Hotel 烏來名湯溫泉會館 www.wulai-spring.com.tw	3	Run of House	Until 31Mar	✓	2050	2790	N/A	N/A	850 / 850 / Nil
		Blackout period: 06-10Mar Hotel stay on Fri-Sat should apply surcharge of HKD650/Room/Night							
9 Plus Spa Hotspring Hotel 北投荷豐溫泉會館 www.lotusspa.com.tw	3	Ya Ju (Double bed)	20Jan-29Feb	✓	2090	2890	N/A	N/A	910 / 910 / Nil
		Elegant Bamboo (Double bed)	01-31Mar						880 / 880 / Nil
Hotel stay on Sat should apply surcharge of HKD280/Room/Night Blackout period: 06-10Mar									
Spa Spring Resort 水都溫泉會館 www.spaspringresort.com.tw	4	Standard Double	20Jan-29Feb	✓	2150	2990	N/A	N/A	930 / 930 / Nil
		Grace/ Spa Spring	01-31Mar						960 / 960 / Nil
Blackout period: 06-10Mar Hotel stay on Fri-Sat should apply surcharge of HKD280/Room/Night Hotel stay during 26-27Feb should apply surcharge of HKD280/Room/Night									
Royal Season Hotel (Beitou) 皇家季節飯店-北投溫泉館 www.taiwanseasonshotel.com/	4	Deluxe Room	Until 31Mar	✓	2290	3290	N/A	N/A	1100 / 1100 / Nil
		Hotel stay on Fri-Sat should apply surcharge of HKD110/Room/Night Hotel stay during 06-10Mar between Mon-Thu should apply surcharge of HKD90/Room/Night Hotel stay during 06-10Mar between Fri-Sat should apply surcharge of HKD190/Room/Night							
Spring City Resort Peitou 春天北投酒店 www.springresort.com.tw/	5	Vista Room / Class Room	Until 31Mar	✓	2290	3290	N/A	N/A	1100 / 1100 / Nil
		Blackout period: 06-10Mar Hotel stay on Sat should apply surcharge of HKD570/Room/Night							
Tien Lai Spring Resort 陽明山天籟溫泉酒店 www.tienlai.com.tw/	5	1 st Wing	Until 31Mar	✓	2350	3350	1750	1490	1130 / 1130 / 200
		Hotel stay during 20Jan-29Feb between Fri-Sat should apply surcharge of HKD720/Single or Twin Room/Night, HKD760/Triple Room/Night Hotel stay during 01-31Mar between Sat should apply surcharge of HKD670/Single or Twin Room/Night, HKD720/Triple Room/Night							
Sweetme Hotspring Resort 水美溫泉會館 www.sweetme.com.tw/	5	Run of House	20Jan-29Feb	✓	2390	3450	1950	1650	1180 / 1180 / 290
			01-31Mar		2390	3490	2490	2250	1210 / 1210 / 570
Blackout period: 06-10Mar Hotel stay on Fri-Sat should apply surcharge of HKD480/Room/Night Hotel stay during 22-28Jan should apply surcharge of HKD730/Room/Night									
Landis Resort Yang Ming Shan 陽明山中國麗緻 www.landisresort.com.tw	5	Standard Room	20Jan-29Feb	✓	2850	4290	2050	1790	1610 / 1610 / 360
			01-31Mar		2690	4050	N/A	N/A	1470 / 1470 / Nil
Blackout period: 06-10Mar Hotel stay during 20Jan-29Feb between Fri-Sat should apply surcharge of HKD310/Room/Night Hotel stay during 01-31Mar between Fri-Sat should apply surcharge of HKD380/Room/Night									
Volandourai Spring Resort 靛蘭朵烏來渡假酒店 www.springparkhotel.com.tw/index.asp	5	Grand View	Until 29Feb	✓	4490	7590	N/A	N/A	3260 / 3260 / Nil
		Added Benefit Hotel offer daily dinner for max 2 persons, this offer only valid for stay during 20Jan-29Feb -Hotel stay on Fri-Sat should apply surcharge of HKD680/Room/Night -Hotel stay during 26-28Feb should apply surcharge of HKD680/Room/Night							

Price inclusive of:

- Roundtrip economy class air ticket by Eva Air (BR)
- 2 nights hotel accommodation at your choice
- Daily Breakfast (Not all Hotels)
- Child without Bed (Not Incl. ABF): HKD1150
- 0.15% TIC Levy

Remarks:

- Booking Class & validity: "Please refer above table"
- Tickets are non-endorse, non-reroute, non-refund
- VALID ON FLIGHT DATE SHOWN ONLY
- All prices & conditions are subject to change without prior notice.

****This package is under the protection of TIC Compensation Fund. ****